

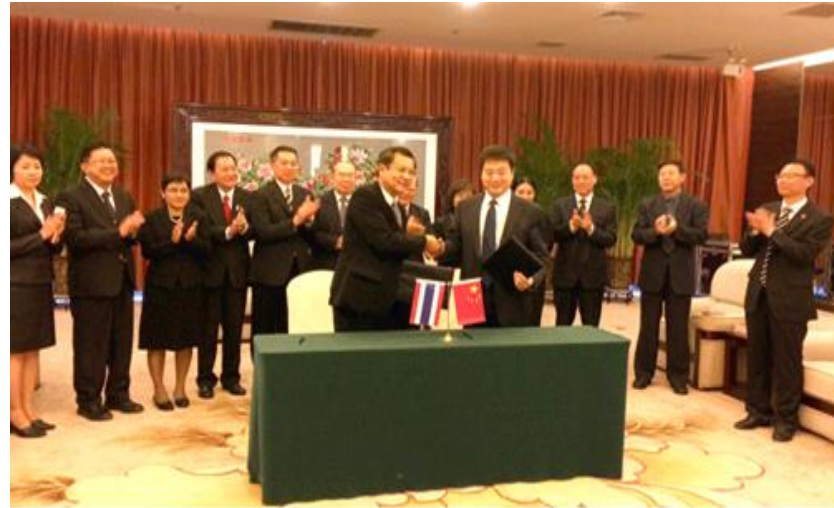
# Ministry of Interior and the Establishment of Provincial Sister City Relationship A Case Study of Udon Thani and Luoyang, Henan Province



Taweesak Tangpathomwong  
Plan and Policy Analyst (Professional Level)  
Office of the Permanent Secretary of Interior

## Ministry of Interior and the establishment of sister cities

The establishment of sister cities concerning the Minister of Interior involve the consideration of Thailand's province and another country's city or a related term with equal status.



At the present time, sister cities have been established between 38 provinces in Thailand and other foreign cities, accumulating in total of 126 pairs.

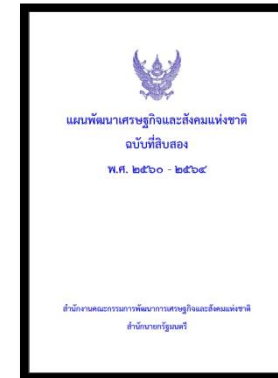
## National Strategy (2018 - 2037)

Security strategies, integration of ASEAN and international cooperation

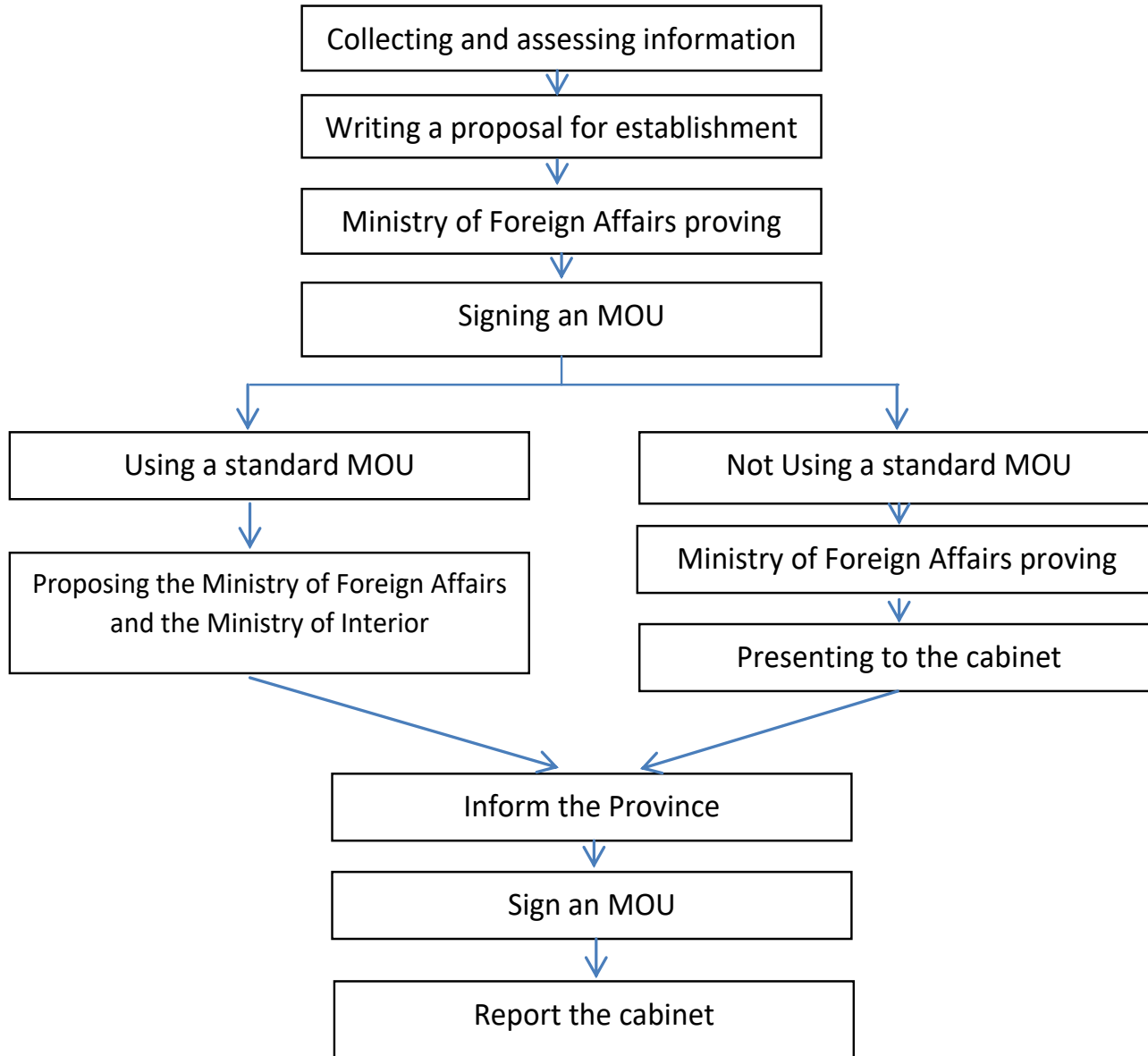
## The Twelfth National Economic and Social Development Plan (2017 - 21)

- Third Strategy (strengthening sustainable economy and commercial competency)
- The Ninth Strategy (the development of city and economic area)
- The Tenth Strategy (international cooperation for development)

## Ministry of Interior Action Plan (2017 – 19)



## Flow chart of the procedures to establish a sister city relationship



## Current overview of the establishment of sister cities by the Ministry of Interior

1. The Ministry of Interior has a comprehensive system that covers and connects every level of administration of the country namely a province, a group of provinces, district, sub-district and village level.

2. The Ministry of Interior has a network of provincial governors who coordinate various sectors to perform local tasks.

3. Thai provinces have the potential to attract trade, investment and tourism from foreign countries.

4. The promotion of understanding about the procedures to establish a sister city relationship amongst operating officers.

5. The operation of various activities after establishing a sister city relationship is still not consistent and there is yet no clear visible result at the present time.

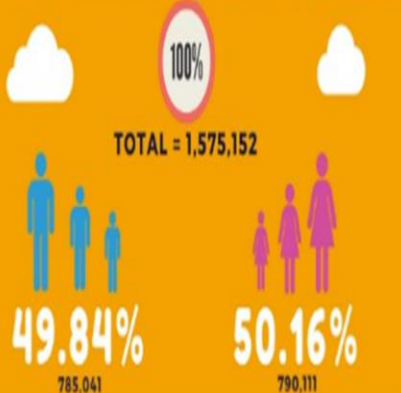


# Vision of Udon Thani

"The city is livable. The Greater Mekong Subregion Center"

## POPULATION

Population and Demographics of Udon Thani



## AGE DISTRIBUTION



134.28 HEAD/SQ.KM.



## UDON THANI TODAY



## Udon Thani and Luoyang, Henan Province

UDON THANI



LUOYANG





**BAN CHIANG ARCHAEOLOGICAL SITE  
UNESCO WORLD HERITAGE**



**LONGMEN GROTTOES SITE UNESCO WORLD HERITAGE**



## Summary of the result of the establishment of the sister city relationship

1. A Memorandum of Understanding to establish a sister city relationship
2. Acknowledge policies
3. Belt and Road Initiative policy
4. A visit to the Peony Garden in Luoyang, which is a major tourist attraction
5. Meeting and discussion about economy
6. Udon Thani Industrial City's executive had an opportunity to present about an industrial estate in Udon Thani
7. In order to provide an overall picture of Sino-Siamese interaction as influenced by the world order structure





CP Super Brand Mall



